



♥ 3 Bedroom House £275,000

75 Collett Avenue, Swindon, SN2 1NQ

mcfarlane  
property.com

## 3 Bedroom House

Robdourne Cheney, Swindon

- NO ONWARD CHAIN
- TWO RECEPTION ROOMS
- THREE BEDROOMS
- GENEROUS REAR GARDEN
- DRIVEWAY PARKING
- POTENTIAL TO EXTEND (STPP)



**\*\*NO ONWARD CHAIN\*\***. A 1950's semi-detached home with the potential to extend (STPP) well located just a short walk from local amenities and local primary schools. Accommodation briefly comprises of two reception rooms, kitchen, three bedrooms and shower room. Further benefits include gated driveway parking, generous rear garden, double glazing throughout, utility cupboard, side access, gas central heating and entrance porch.

The property is in need of some updating throughout but would make an ideal family home.

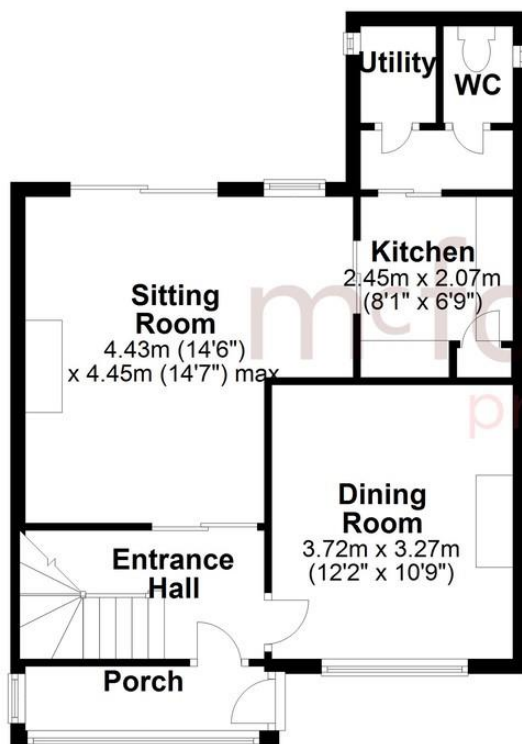






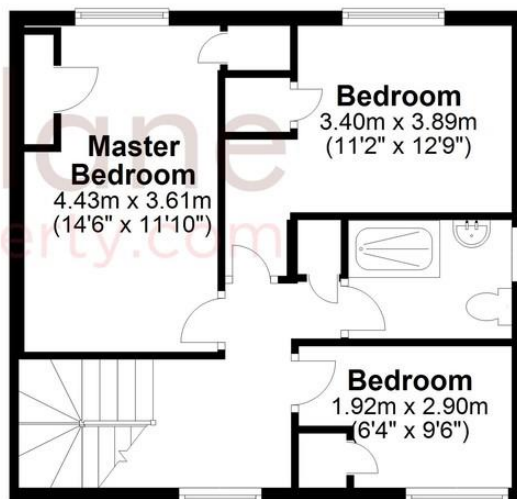
## Ground Floor

Approx. 49.5 sq. metres (532.4 sq. feet)



## First Floor

Approx. 41.4 sq. metres (445.4 sq. feet)



Total area: approx. 90.8 sq. metres (977.8 sq. feet)

We   
where you  
**LIVE**

Our team are friendly, experienced and are all local. They know it better than they do their own living rooms and can help you find what you're looking for because **we love where we live.**

We would be delighted to show you around this property.

**Because every home  
needs a personal touch.**

**If you would like to view this  
property then please get in touch.**

📞 01793 296880

✉ [oldtown@mcfarlaneproperty.com](mailto:oldtown@mcfarlaneproperty.com)

[mcfarlaneproperty.com](http://mcfarlaneproperty.com)

**mcfarlane**  
property.com

### Cricklade.

102 High Street  
Cricklade SN6 6AA

📞 01793 751044

### Marlborough.

106 High Street  
Marlborough SN8 1LT

📞 01672 514380

### Old Town.

28-30 Wood Street  
Swindon SN1 4AB

📞 01793 296880

### Swindon.

The Village Centre,  
Redhouse SN25 2FW

📞 01793 296600

Agents Note: Whilst every care has been taken to prepare these sales particulars, they are for guidance purposes only. All measurements are approximate are for general guidance purposes only and whilst every care has been taken to ensure their accuracy, they should not be relied upon and potential buyers are advised to recheck the measurements