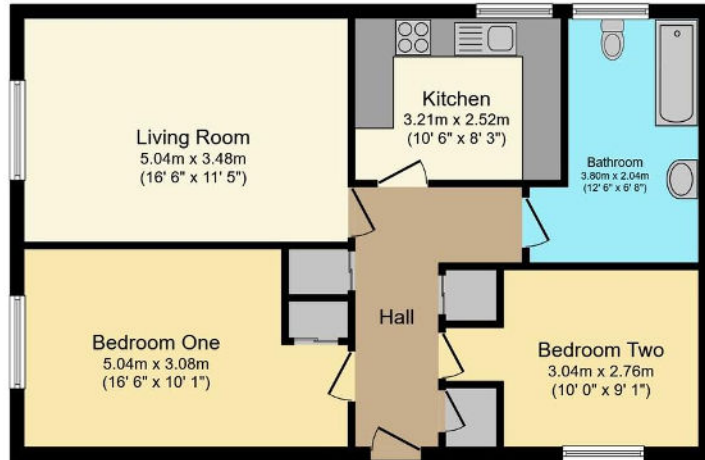




♥ 2 Bedrooms Ground Floor Flat Asking Price Of £235,000

13 Saxon Forge, Ramsbury, Marlborough, SN8 2QG

mcfarlane
property.com



Floor Plan

Floor area 69.8 sq.m. (752 sq.ft.) approx

Total floor area 69.8 sq.m. (752 sq.ft.) approx

This floor plan is for illustration purposes only and may not be representative of the property. The position and size of doors, windows and other fixtures are approximate. Unauthorised reproduction prohibited. © mcFarlane

- Two Double Bedrooms
- Parking Space
- Kitchen
- Fully tiled bathroom with shower over bath

A deceptively spacious ground floor apartment situated in the heart of this highly sought after village, just a few moments walk from shops, village hall, and the Bell Hotel. The accommodation includes: Living room / diner, a good size kitchen and two excellent double bedrooms. Electric storage heating and double glazed throughout. Parking Space

The property is offered for sale with no onward chain.


We 
where you
LIVE

Our team are friendly, experienced and are all local. They know it better than they do their own living rooms and can help you find what you're looking for because **we love where we live.**

We would be delighted to show you around this property.

**Because every home
needs a personal touch.**

**If you would like to view this
property then please get in touch.**

 01672 514380

 marlborough@mcFarlaneproperty.com

mcFarlaneproperty.com

mcFarlane
property.com

Cricklade.
102 High Street
Cricklade SN6 6AA
 01793 751044

Marlborough.
106 High Street
Marlborough SN8 1LT
 01672 514380

Old Town.
28-30 Wood Street
Swindon SN1 4AB
 01793 296880

Swindon.
The Village Centre,
Redhouse SN25 2FW
 01793 296600

Agents Note: Whilst every care has been taken to prepare these sales particulars, they are for guidance purposes only. All measurements are approximate are for general guidance purposes only and whilst every care has been taken to ensure their accuracy, they should not be relied upon and potential buyers are advised to recheck the measurements