



2 Bedroom Apartment **£180,000**

The Pinnacle, 3 Horder Mews, Swindon, SN1 3ED

mcfarlane
property.com

2 Bedroom Apartment Swindon, Old Town

- Fantastic Location
 - Two Double Bedrooms
 - Bathroom and En-Suite
 - Separate Kitchen
 - Ground Floor
 - Walking Distance to Wood Street
 - Secure Entry Phone System
 - Parking
-

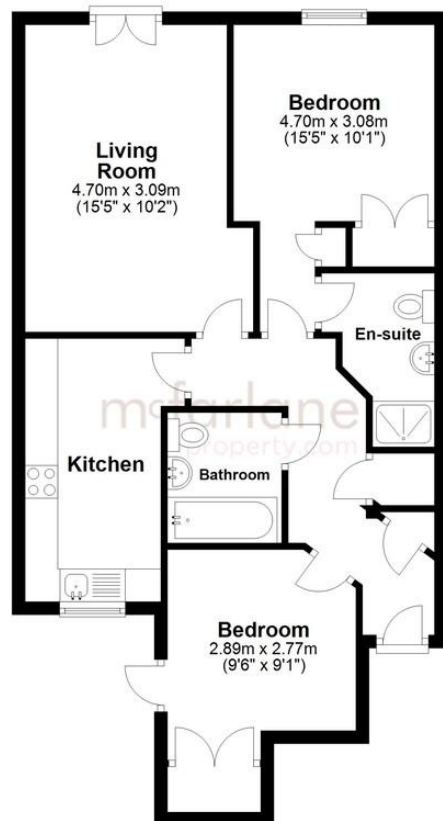


McFarlane Sales & Lettings are delighted to offer this highly desirable ground floor apartment in Horder Mews, Old Town. Located adjacent to Lawn Woods and just a short walk from Old Town's various bars, restaurants and other amenities, the property briefly comprises entrance hall, spacious lounge/diner with French doors, modern fitted kitchen with fully integrated appliances, master bedroom with en-suite and fitted wardrobes, a second double bedroom with fitted wardrobes & access to a private courtyard and a modern family bathroom. The property also benefits from secure phone entry system, gas central heating and one allocated parking space. The property is currently tenanted achieving £875pcm.



Ground Floor

Approx. 63.5 sq. metres (683.5 sq. feet)



Total area: approx. 63.5 sq. metres (683.5 sq. feet)

We 
where you
LIVE

Our team are friendly, experienced and are all local. They know it better than they do their own living rooms and can help you find what you're looking for because **we love where we live.**

We would be delighted to show you around this property.

**Because every home
needs a personal touch.**

**If you would like to view this
property then please get in touch.**

📞 01793 296880

✉ oldtown@mcfarlaneproperty.com

mcfarlaneproperty.com

mcfarlane
property.com

Cricklade.

102 High Street
Cricklade SN6 6AA

📞 01793 751044

Marlborough.

106 High Street
Marlborough SN8 1LT

📞 01672 514380

Old Town.

28-30 Wood Street
Swindon SN1 4AB

📞 01793 296880

Swindon.

The Village Centre,
Redhouse SN25 2FW

📞 01793 296600

Agents Note: Whilst every care has been taken to prepare these sales particulars, they are for guidance purposes only. All measurements are approximate and are for general guidance purposes only and whilst every care has been taken to ensure their accuracy, they should not be relied upon and potential buyers are advised to recheck the measurements