



## 1 Bedroom Apartment

Frampton Close, Eastleaze, Swindon, SN5 7EN

Guide Price £107,500

**mcfarlane**  
property.com

# 1 Bedroom Apartment

West Swindon Wiltshire

- FIRST FLOOR APARTMENT
- IN NEED OF RENOVATION
- EXCELLENT INVESTMENT OPPORTUNITY

- IN NEED OF REFURBISHMENT - FIRST FLOOR FLAT  
- WEST SWINDON LOCATION - EXCELLENT INVESTMENT OPPORTUNITY - NO ONWARD CHAIN -

An excellent investment for a first-floor apartment needing complete refurbishment throughout. The property occupies a lovely cul-de-sac position in West Swindon and provides good value for money for somebody looking to improve a property. The accommodation comprises: Entrance Hall with stairs rising to Lounge, Kitchen, Double Bedroom & Bathroom. Outside there is Allocated Parking. No Onward Chain.

Potential yield of 7%



mcfarlane  
property.com

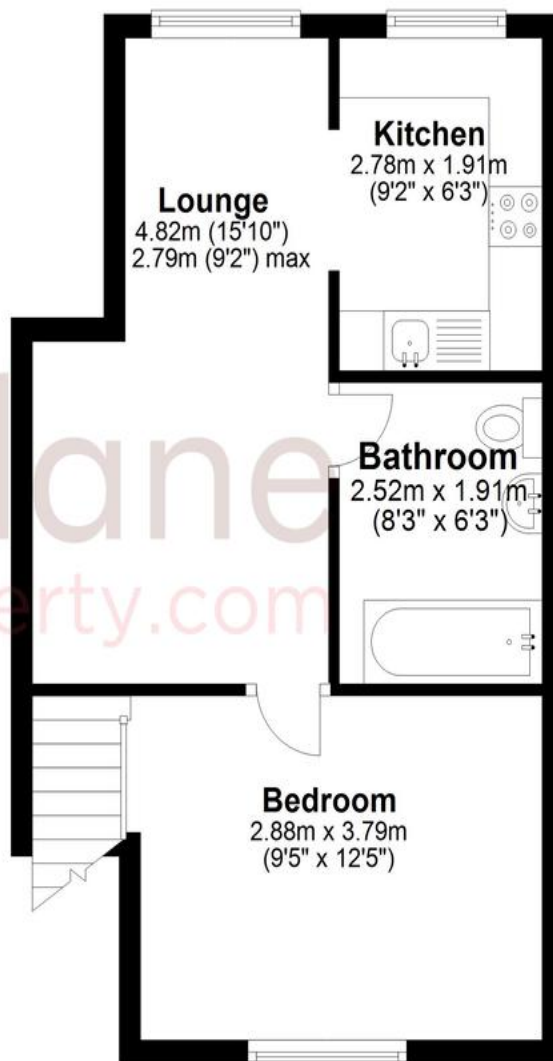
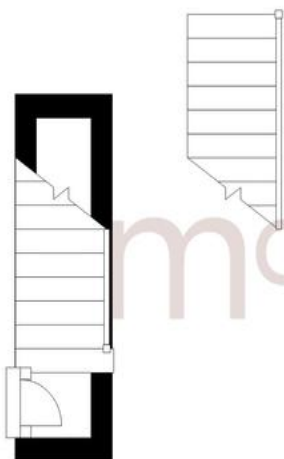


## First Floor

Approx. 34.7 sq. metres (373.2 sq. feet)

## Ground Floor

Approx. 1.4 sq. metres (14.9 sq. feet)



We   
where you  
**LIVE**

Our team are friendly, experienced and are all local. They know it better than they do their own living rooms and can help you find what you're looking for because **we love where we live.**

We would be delighted to show you around this property.

**Because every home  
needs a personal touch.**

**If you would like to view this  
property then please get in touch.**

📞 01793 751044

✉ cricklade@mcfarlaneproperty.com

[mcfarlaneproperty.com](http://mcfarlaneproperty.com)

Total area: approx. 36.0 sq. metres (388.0 sq. feet)

**mcfarlane**  
property.com

### **Cricklade.**

102 High Street  
Cricklade SN6 6AA

📞 01793 751044

### **Marlborough.**

106 High Street  
Marlborough SN8 1LT

📞 01672 514380

### **Old Town.**

28-30 Wood Street  
Swindon SN1 4AB

📞 01793 296880

### **Swindon.**

The Village Centre,  
Redhouse SN25 2FW

📞 01793 296600

Agents Note: Whilst every care has been taken to prepare these sales particulars, they are for guidance purposes only. All measurements are approximate and are for general guidance purposes only and whilst every care has been taken to ensure their accuracy, they should not be relied upon and potential buyers are advised to recheck the measurements