



2 Bedroom Close to High Street + Garage

Bath Court, Cricklade, Wiltshire SN6 6DY

Offers in Excess of £290,000

mcfarlane
property.com

Stunning Two Bedroom Home Cricklade, North Wiltshire

- Beautifully Presented Cottage
- Refurbished and Modernised
- Close to the High Street and Amenities

A beautifully presented Two Double Bedroom Cottage in the former market town of Cricklade and the start of the River Thames.

Located just off the High Street in Cricklade this charming and attractive two double bedroom cottage offers spacious accommodation and simply **MUST BE VIEWED**. The accommodation briefly comprises: Entrance Hall, Lounge/Dining Room, Fitted Kitchen, Cloakroom, Landing Two Double Bedrooms and Refitted Bathroom. Outside there is an enclosed Rear Garden with Private Rear Access and Single Garage. Call McFarlane Sales & Lettings Cricklade 01793 751 044 **SOLE AGENTS**.

AGENTS NOTE

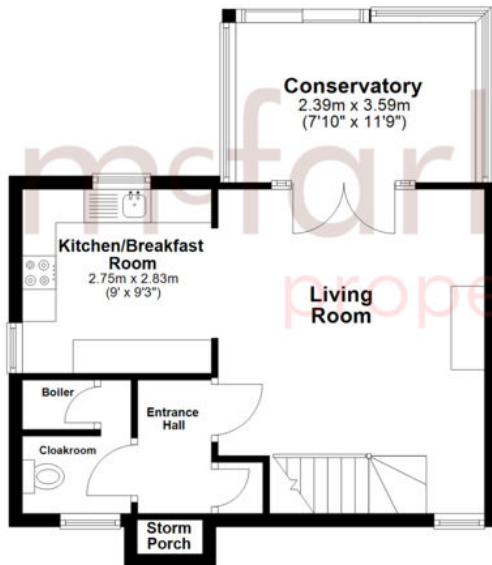
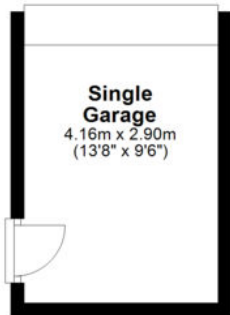
Under the terms of the estate agents 1979, we are obliged to inform you the seller of this property is an employee of McFarlane Sales & Lettings.



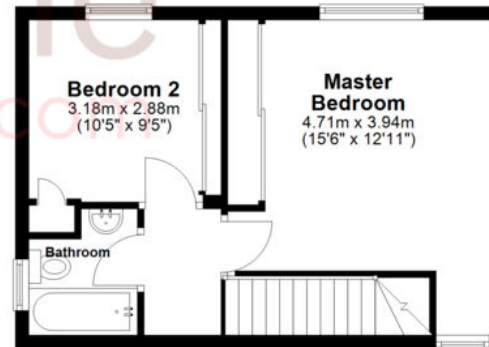


We 
where you
LIVE

Ground Floor
Approx. 55.1 sq. metres (593.6 sq. feet)



First Floor
Approx. 32.6 sq. metres (351.0 sq. feet)



Total area: approx. 87.8 sq. metres (944.6 sq. feet)

Our team are friendly, experienced and are all local. They know it better than they do their own living rooms and can help you find what you're looking for because **we love where we live.**

We would be delighted to show you around this property.

**Because every home
needs a personal touch.**

**If you would like to view this
property then please get in touch.**

📞 01793 751044

✉ cricklade@mcfarlaneproperty.com

mcfarlaneproperty.com

mcfarlane
property.com

Cricklade.
102 High Street
Cricklade SN6 6AA
📞 01793 751044

Marlborough.
106 High Street
Marlborough SN8 1LT
📞 01672 514380

Old Town.
28-30 Wood Street
Swindon SN1 4AB
📞 01793 296880

Swindon.
The Village Centre,
Redhouse SN25 2FW
📞 01793 296600

Agents Note: Whilst every care has been taken to prepare these sales particulars, they are for guidance purposes only. All measurements are approximate and for general guidance purposes only and whilst every care has been taken to ensure their accuracy, they should not be relied upon and potential buyers are advised to recheck the measurements