



2 Bedroom Top Floor Apartment £150,000

Stackpole Crescent, Swindon, Wiltshire, SN25 2AP

**mcfarlane**  
property.com

## 2 Bedroom Top Floor Apartment North Swindon

---

- TOP FLOOR APARTMENT
  - TWO DOUBLE BEDROOMS
  - EN-SUITE TO MASTER
  - FAMILY BATHROOM
- 

A lovely TWO DOUBLE BEDROOM apartment situated on the TOP FLOOR of this attractive apartment building situated in a popular area of North Swindon. The accommodation includes a light and spacious OPEN PLAN kitchen/living space with a Juliette Balcony and window to the side, the master bed room has an EN-SUITE and built in storage. The second bedroom is a double and there is a family bathroom as well as an airing cupboard and storage cupboard in the entrance hall. There is also access to loft space for additional storage. There is an allocated parking space in a private car park to the rear of the property.

Council Tax C

Council Tax Estimate £1,954

Remaining Lease 105 years

Service Charge (£PA) £2,690

Ground Rent (£PA) £125

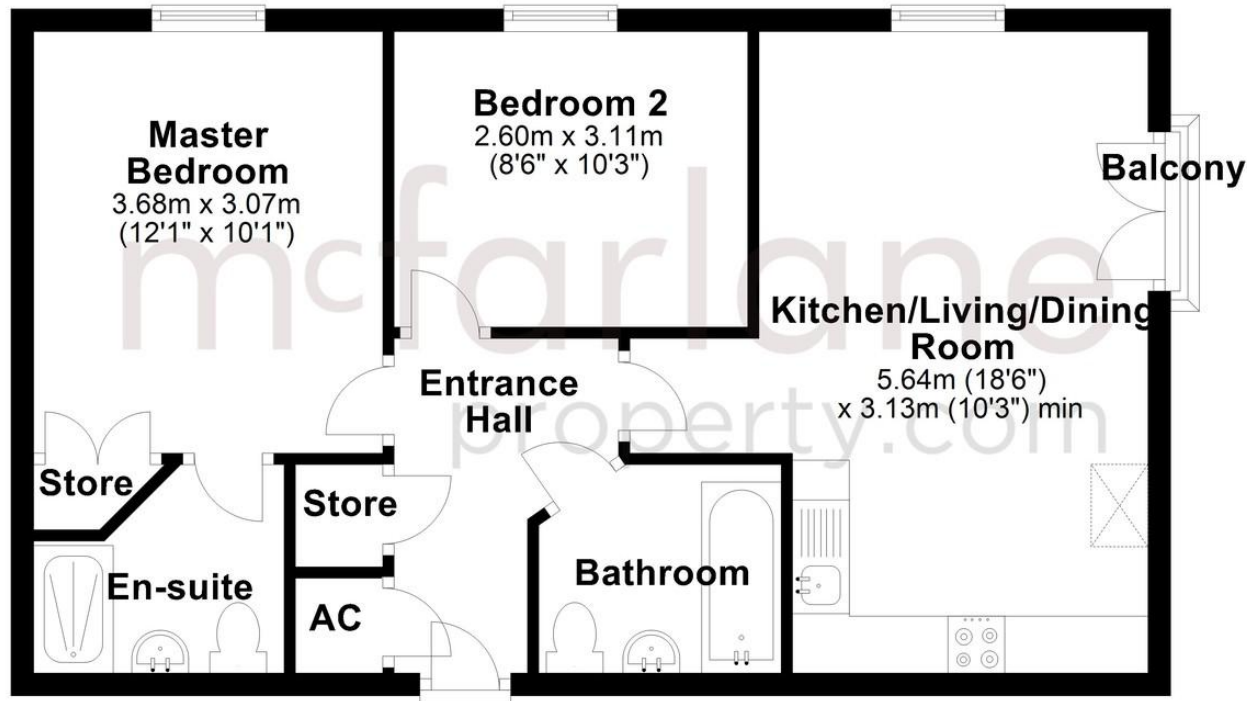




We   
where you  
**LIVE**

## Second Floor

Approx. 55.3 sq. metres (595.0 sq. feet)



Total area: approx. 55.3 sq. metres (595.0 sq. feet)

Our team are friendly, experienced and are all local. They know it better than they do their own living rooms and can help you find what you're looking for because **we love where we live.**

We would be delighted to show you around this property.

**Because every home  
needs a personal touch.**

**If you would like to view this  
property then please get in touch.**

📞 01793 296600

✉ [swindon@mcfarlaneproperty.com](mailto:swindon@mcfarlaneproperty.com)

[mcfarlaneproperty.com](http://mcfarlaneproperty.com)

**mcfarlane**  
property.com

### **Cricklade.**

102 High Street  
Cricklade SN6 6AA

📞 01793 751044

### **Marlborough.**

106 High Street  
Marlborough SN8 1LT

📞 01672 514380

### **Old Town.**

28-30 Wood Street  
Swindon SN1 4AB

📞 01793 296880

### **Swindon.**

The Village Centre,  
Redhouse SN25 2FW

📞 01793 296600

Agents Note: Whilst every care has been taken to prepare these sales particulars, they are for guidance purposes only. All measurements are approximate are for general guidance purposes only and whilst every care has been taken to ensure their accuracy, they should not be relied upon and potential buyers are advised to recheck the measurements