



2 Bedroom Ground Floor Flat **£160,000**

2 Rysy Court, Swindon, Wiltshire, SN25 1TH

**mcfarlane**  
property.com

## 2 Bedroom Ground Floor Flat Swindon, North Swindon

- GROUND FLOOR
- ALLOCATED PARKING
- TWO DOUBLE BEDROOMS
- GAS CENTRAL HEATING

A VERY WELL presented two bedroom GROUND FLOOR apartment. The property comprises of an amazing size living room with a space for dining to the side, just in front of the kitchen. Two DOUBLE bedrooms and a large bathroom with that all important window. There is plenty of storage to go along with this property, and an allocated parking space round the back. There is natural light shining through the whole property.

Service charge- £1200p.a  
Ground rent- £200p.a  
Lease remaining- 81 years  
Council Tax Band C

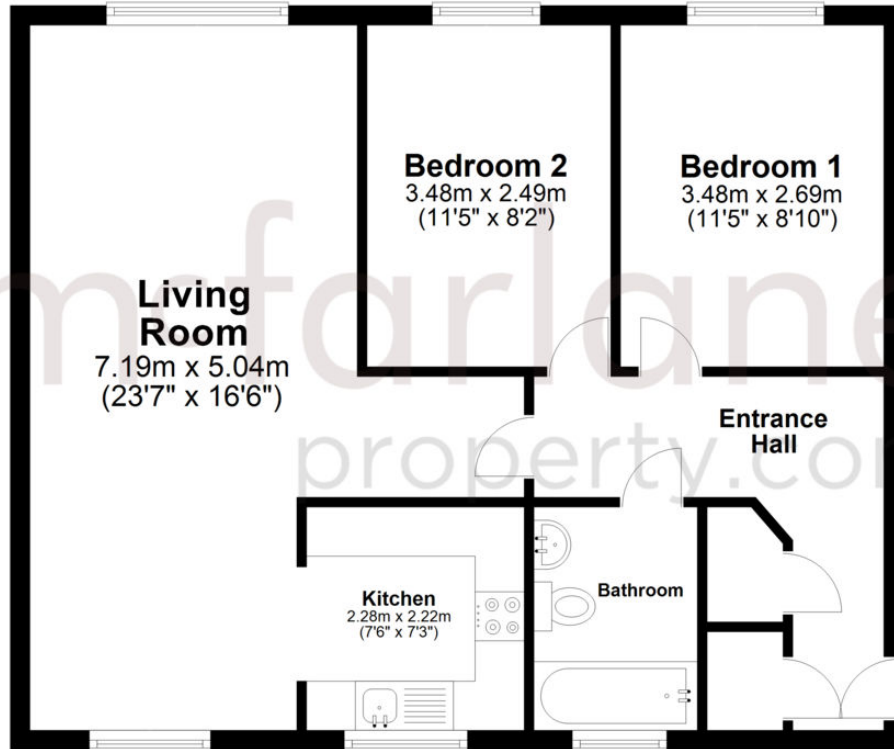






## Ground Floor

Approx. 61.8 sq. metres (665.4 sq. feet)



Total area: approx. 61.8 sq. metres (665.4 sq. feet)

We   
where you  
**LIVE**

Our team are friendly, experienced and are all local. They know it better than they do their own living rooms and can help you find what you're looking for because **we love where we live.**

We would be delighted to show you around this property.

**Because every home  
needs a personal touch.**

**If you would like to view this  
property then please get in touch.**

📞 01793 296600

✉ [swindon@mcfarlaneproperty.com](mailto:swindon@mcfarlaneproperty.com)

[mcfarlaneproperty.com](http://mcfarlaneproperty.com)

**mcfarlane**  
property.com

### **Cricklade.**

102 High Street  
Cricklade SN6 6AA

📞 01793 751044

### **Marlborough.**

106 High Street  
Marlborough SN8 1LT

📞 01672 514380

### **Old Town.**

28-30 Wood Street  
Swindon SN1 4AB

📞 01793 296880

### **Swindon.**

The Village Centre,  
Redhouse SN25 2FW

📞 01793 296600

Agents Note: Whilst every care has been taken to prepare these sales particulars, they are for guidance purposes only. All measurements are approximate are for general guidance purposes only and whilst every care has been taken to ensure their accuracy, they should not be relied upon and potential buyers are advised to recheck the measurements