



## 6 Edwards Meadow, Marlborough

Guide Price £795,000 | £2,850 pcm

**m<sup>c</sup>farlane**  
property.com





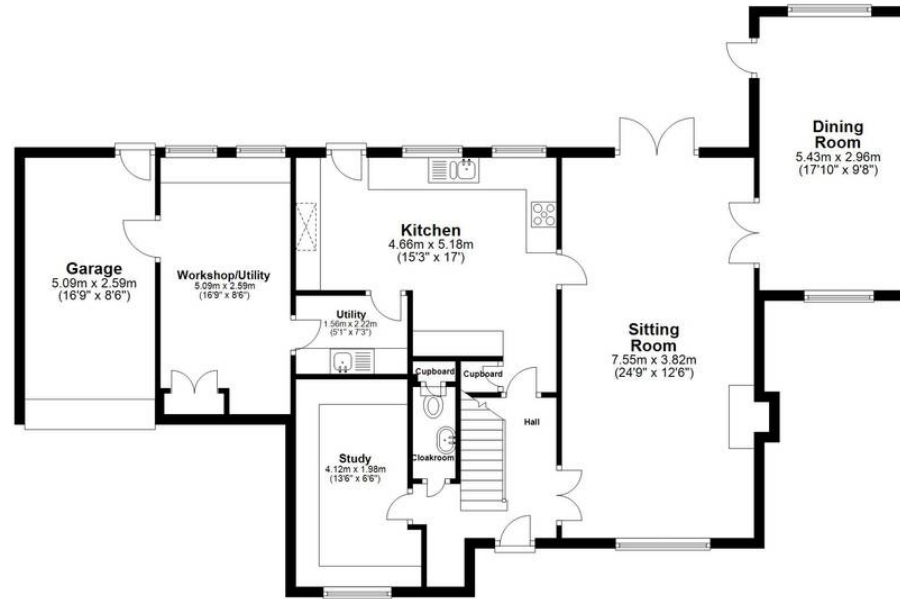
## 6 Edwards Meadow

Welcome to Edwards Meadow, an expansive family residence characterised by its brick facade, tiled roof, and double glazed windows. Positioned perfectly, this residence offers versatile living spaces, adaptable to accommodate your unique lifestyle. Upon entry, the capacious hallway sets the stage, granting access to all primary rooms. The inviting sitting room features a focal wood-burner stove, ample natural light, and French doors leading to the garden, ideal for hosting guests. Adjacent lies the dining room, a generously proportioned space bathed in sunlight, courtesy of a later extension to the property. The heart of the home, the sizable kitchen/breakfast room, is equipped with integrated appliances and seamlessly connects to both a utility room and workshop, with convenient garage access. For those working remotely, the study with its wooden flooring provides an ideal workspace, while a downstairs WC completes the ground floor amenities. Ascending to the first floor, a spacious landing serves as a gateway to five bedrooms, three of which offer picturesque rear views. The primary bedroom features abundant built-in wardrobes and an en-suite bathroom with bath and overhead shower, while the remaining bedrooms boast similar wardrobe provisions, with the second bedroom also offering its own en-suite.



### Ground Floor

Approx. 114.9 sq. metres (1236.5 sq. feet)



### First Floor

Approx. 88.0 sq. metres (947.6 sq. feet)



Total area: approx. 202.9 sq. metres (2184.1 sq. feet)

## Marlborough Sales

McFarlane Sales & Letting, 106 High Street – SN8 1LT

01672  
514380

• [marlborough@mcfarlaneproperty.com](mailto:marlborough@mcfarlaneproperty.com) • [www.mcfarlaneproperty.com/](http://www.mcfarlaneproperty.com/)

mcfarlane  
property.com